

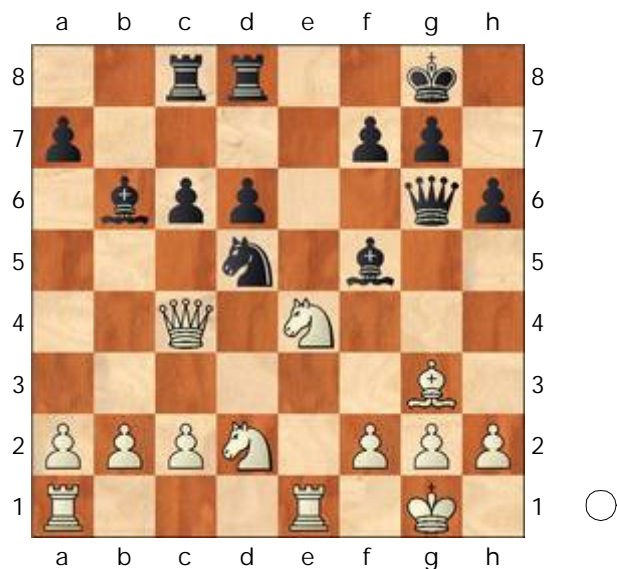
□ Aronin, Lev Solomonovich

■ Makarov, Andrei

Moscow-ch 42nd

[Doe, John]

1.e4 e5 2.Sf3 Sc6 3.Lb5 Sf6 4.Sc3  
Lc5 5.0-0 d6 6.d4 exd4 7.Sxd4 Ld7  
8.Lxc6 bxc6 9.Lg5 h6 10.Lh4 0-0  
11.Dd3 De7 12.Tfe1 De5 13.Sf3 Dh5  
14.e5 Lf5 15.Da6 Sd5 16.Se4 Dg6  
17.Sfd2 Lb6 18.exd6 cxd6 19.Dc4  
Tac8 20.Lg3 Tfd8 Diagramm



21.Da4 c5

[ 21...Lxe4 22.Dxe4 f5 23.Dd3 Df6  
24.h3 f4 25.Se4 Dg6 26.Lh4 Tf8 ]

22.Sf3 Lxe4 23.Txe4 Sb4

[ 23...Sf6 24.Te7 c4 25.Tae1 Sh5 ]

24.Tae1 d5 25.T4e2 d4 26.Se5 Df6

27.a3 Sc6 28.Sd3 La5 29.Td1 Lb6

30.Tde1 La5 31.b4 cxb4 32.axb4

Lb6 33.h3 Td7? 34.Db5?

[ 34.Te8+ Txe8 35.Txe8+ Kh7  
36.Tc8+- ]

34...Tcd8 35.Dh5 Kh7 36.Lh4 g5

37.Lg3 Dg6

[ 37...Td5 ]

38.Dxg6+ fxg6 39.Te6 Tc8

C48

1-0

1965

[ 39...Tc8 40.b5 Sa5 ( 40...Sd8 )  
41.Se5 Tg7 42.Sg4 h5 43.Sf6+ Kh6  
44.Te8 ( 44.h4 ) 44...Txe8 ( 44...Td8 )  
45.Txe8 Tf7 46.Le5 ]

C69

□ Fischer, Robert James

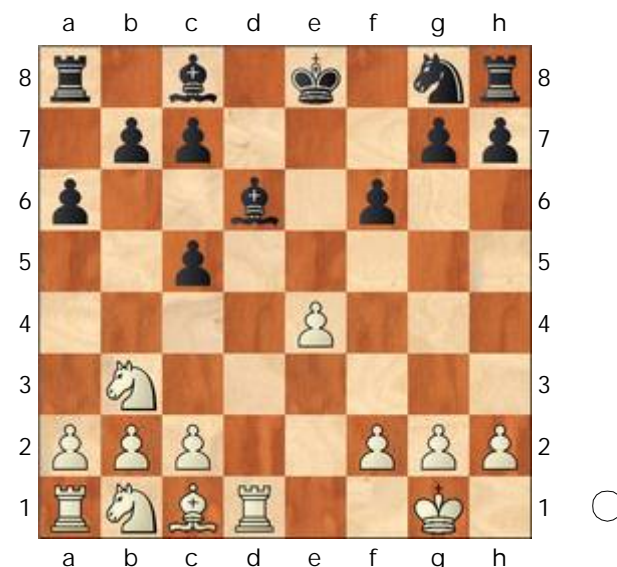
■ Portisch, Lajos

Havana ol (Men) fin-A (6)

1966

[Doe, John]

1.e4 e5 2.Sf3 Sc6 3.Lb5 a6 4.Lxc6  
dxc6 5.0-0 f6 6.d4 exd4 7.Sxd4 c5  
8.Sb3 Dxd1 9.Txd1 Ld6 Diagramm



10.Sa5 b5

[ 10...Lg4 11.f3 0-0-0 12.e5+- ]  
[ 10...b6 11.Sc4 Le7 12.Lf4 Ld8<sup>2</sup> ]

11.c4

[ 11.a4 Se7 12.Sa3 Tb8 13.axb5  
axb5 14.c4 Ld7 ( 14...b4 15.Sb5  
Le5 16.Le3± ) 15.Sxb5 Lxb5 16.cxb5  
Txb5 17.Sc4<sup>2</sup> ]

11...Se7 12.Le3 f5 13.Sc3 f4

[ 13...0-0 ]

14.e5 Lxe5 15.Lxc5 Lxc3 16.bxc3

Sg6 17.Sc6 Le6 18.cxb5 axb5

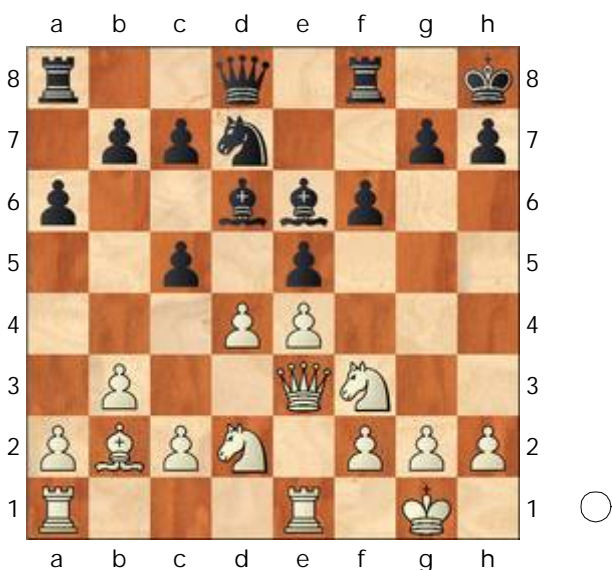
19.Sa7 Tb8 20.Tdb1 Kf7 21.Sxb5

Thd8 22.Tb4 Lxa2 23.Sxc7 Tbc8

24.h4 Td2 25.Lb6 f3 26.Le3 Te2  
 27.Sb5 Ta8 28.h5 Se5 29.Tf4+ Ke7  
 30.Td1 Tc8 31.Te4 Kf6 32.Td6+ Kf5  
 33.Tf4+ Kg5 34.Txf3+  
 1-0

□ Hecht,Hans Joachim **C85** 2470  
 ■ Kostro,Jerzy **2380**  
 Hoogovens-B Wijk aan Zee (15) 01.1971  
*[Doe,John]*

1.e4 e5 2.Sf3 Sc6 3.Lb5 a6 4.La4  
 Sf6 5.0-0 Le7 6.Lxc6 dxc6 7.De1  
 Le6 8.b3 Sd7 9.Lb2 f6 10.d4 Ld6  
 11.Sbd2 0-0 12.De3 Kh8 13.Tfe1 c5  
 Diagramm

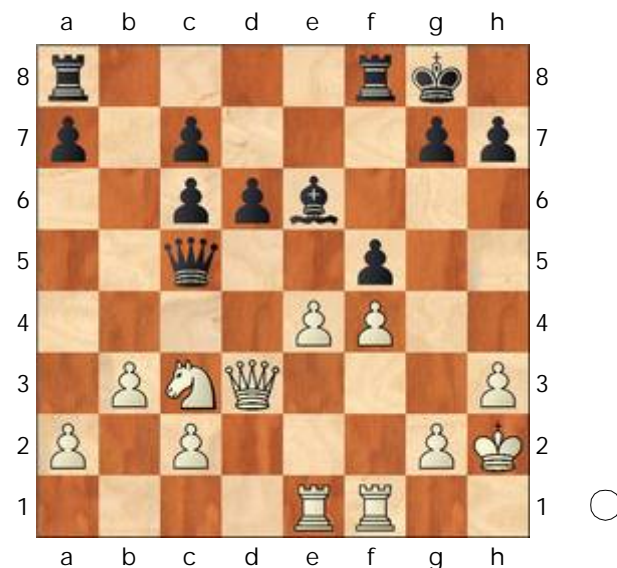


14.d5 Lf7 15.a4 a5  
 [ 15...b5 ]  
 16.Sc4 Ta6 17.Lc3 b6 18.Sh4 Te8  
 19.Sf5 Lf8 20.Tad1 Ta7 21.f4 exf4  
 22.Dxf4 Lg6 23.Sh4 Lh5 24.Td3  
 [ 24.g4 Lf7 ( 24...Lg6 25.Sxg6+ hxg6  
 26.e5 fxe5 27.Df7 ; 24...g5 25.Dxg5 )  
 25.e5 ]  
 24...Se5 25.Sxe5 fxe5 26.Lxe5 Txe5  
 27.Dxe5 Dxh4 28.Tf1 Ta8 29.Th3  
 Ld6 30.Txh4  
 1-0

**C66**

□ Lasker,Emanuel  
 ■ Cohn,Erich  
 St Petersburg 1909  
*[Doe,John]*

1.e4 e5 2.Sf3 Sc6 3.Lb5 Sf6 4.0-0  
 Le7 5.Sc3 d6 6.d4 Ld7 7.Lg5 exd4  
 8.Sxd4 0-0 9.Lxc6 bxc6 10.Dd3 Sg4  
 11.Lxe7 Dxe7 12.Tae1 Dh4 13.Sf3  
 Dh5 14.h3 Se5 15.Sxe5 Dxe5 16.f4  
 Dc5+ 17.Kh2 Le6 18.b3 f5  
 Diagramm  
 [ 18...f6 ]



19.e5 d5  
 [ 19...Tae8 ]  
 20.Sa4 De7 21.Dd4 Tfb8 22.Sc5 a5  
 23.a3 Kf7 24.Ta1 Tb5 25.b4 Tab8  
 26.c3 Txc5 27.bxc5 Tb5 28.Tab1  
 Dxc5 29.a4  
 1-0

**C54**

□ **Tarrasch,Siegbert**

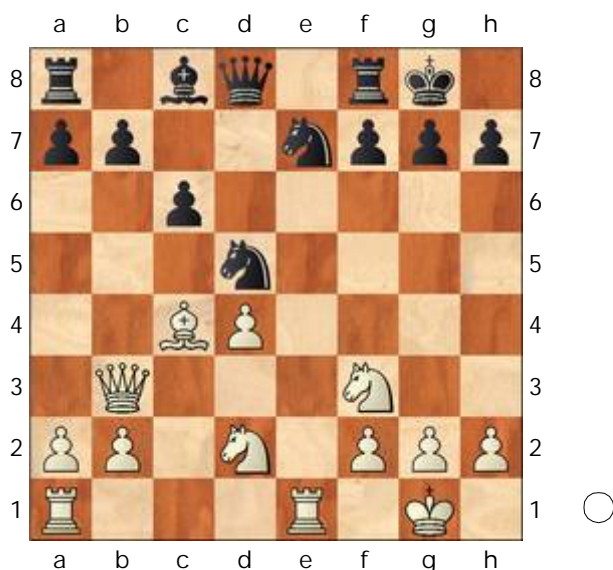
■ **Capablanca,Jose Raul**

San Sebastian (4)

24.02.1911

[Doe,John]

1.e4 e5 2.Sf3 Sc6 3.Lc4 Lc5 4.c3  
Sf6 5.d4 exd4 6.cxd4 Lb4+ 7.Ld2  
Lxd2+ 8.Sbxd2 d5 9.exd5 Sxd5  
10.Db3 Sce7 11.0-0 0-0 12.Tfe1 c6  
Diagramm



13.a4 Db6 14.Da3 Le6 15.a5 Dc7  
16.Se4 Tad8 17.Sc5 Lc8 18.g3 Sf5  
19.Tad1 Sd6 20.Lxd5 Sb5 21.Db4  
Txd5 22.Sd3 Lg4 23.Sde5 h5

[ 23...Txe5 24.Sxe5 Lxd1 25.Txd1  
Td8 26.a6 bxa6 ( 26...b6 27.Dc4  
Td6? 28.d5 ) 27.Dc5 Td6 28.Sc4  
( 28.Ta1 ) ]

24.Sxg4

[ 24.a6 ]

24...hxg4 25.Sh4 Tfd8 26.Te7 Dd6

[ 26...Dc8µ ]

27.Dxd6 Sxd6 28.a6 bxa6 29.Txa7  
Sb5 30.Txa6 Sxd4 31.Kf1 g5 32.Sg2  
Sf3 33.Txd5 cxd5

[ 33...Sxh2+ 34.Ke2 cxd5 35.Se3 d4  
36.Sf5 d3+ 37.Kd1= ]

34.Se1 Te8

[ 34...Tc8 35.Sxf3 gxf3 36.Ke1 Tc2 ]

35.Sxf3 gxf3 36.Td6 Tc8 37.Ke1  
Te8+ 38.Kf1 Tc8

1/2-1/2

**D41**

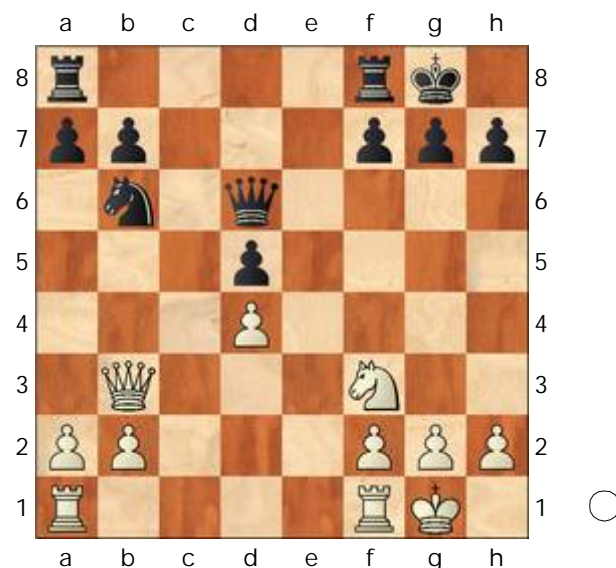
□ **Alekhine,Alexander**

■ **Eliskases,Erich Gottlieb**

Buenos Aires ol (Men) prel-B (5)

[Doe,John]

1.e4 c6 2.d4 d5 3.exd5 cxd5 4.c4  
Sf6 5.Sc3 e6 6.Sf3 Le7 7.cxd5  
Sxd5 8.Lb5+ Ld7 9.Lxd7+ Sxd7  
10.Sxd5 exd5 11.Db3 Sb6 12.0-0  
0-0 13.Lf4 Ld6 14.Lxd6 Dxd6  
Diagramm



15.Tfe1 Tac8 16.Tac1 h6 17.Se5  
Tc7 18.g3 Tfc8 19.Txc7 Txc7  
20.Db5 Sd7 21.Sxd7 Txd7 22.Te8+  
Kh7 23.h4 a6 24.De2 Td8 25.Te7  
Td7 26.Te5 g6 27.h5 Df6 28.De3  
Td6 29.Db3 Tb6 30.hxg6+ Dxg6  
31.Dxd5 Txb2 32.Tf5 Tb5 33.Txf7+  
Kg8 34.Tf6+ Txd5 35.Txg6+ Kh7  
36.Tb6 Txd4 37.Txb7+ Kg8 38.Tb6  
Ta4 39.Txh6 Txa2 40.Kg2 a5 41.Ta6  
a4 42.Ta7 a3 43.g4 Kf8 44.g5 Kg8  
45.Kg3 Ta1 46.Kg4 Tg1+ 47.Kf5 Tg2

**48.f4 a2 49.Kf6**  
**1-0**

