

A81

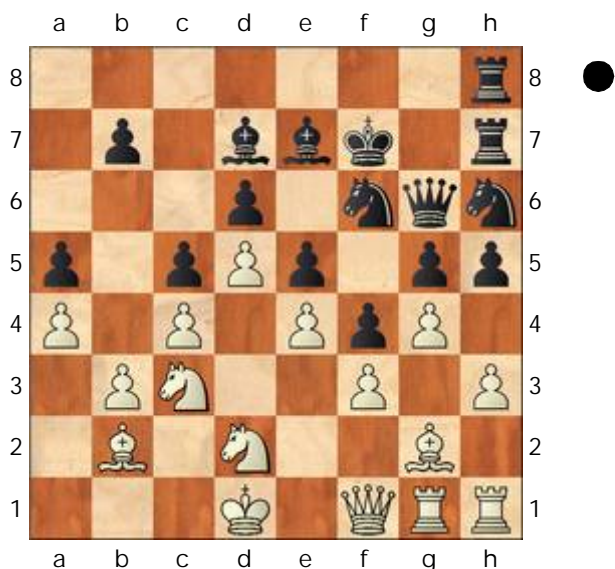
□ Goldberg

■ Heppner,Ernst

Senioren Heusenstamm 27.10.2011

[Doe,John]

1.d4 e6 2.g3 f5 3.e3 Sf6 4.Lg2 Le7
5.Se2 0-0 6.Sd2 d6 7.b3 Sc6 8.Lb2
Ld7 9.0-0 De8 10.a3 a5 11.c3 e5
12.d5 Sd8 13.c4 c5 14.a4 g5 15.Sc3
Dg6 16.De2 Sf7 17.f3 Tae8 18.e4 f4
19.g4 h5 20.h3 Kg7 21.Kf2 Th8
22.Th1 Th7 23.Tag1 Teh8 24.Df1
Sh6 25.Ke1 Kf7 26.Kd1 Diagramm



hxg4 27.hxg4 Shxg4 28.Txh7+ Txh7
29.fxg4 Sxg4 30.Kc1 Se3 31.Df2 g4
32.Sd1 Lh4

[32...g3 33.De1 Sxg2 34.Txg2 Th2

A) 35.Tg1 Dg4

A1) 36.Sf1 Te2 37.Dxa5 g2
38.Sd2 f3 ;

A2) 36.Lc3 b6 37.Kb1 Te2
38.Df1 g2 39.Df3 Dxf3 40.Sxf3
Lg4 41.Sh2 (41.Se1 f3) 41...Lh5
42.Le1 f3 ;

A3) 36.Sc3 g2 ;

A4) 36.Df1 Dh3 37.Dxh3
(37.Sf3 Dxf1 38.Txf1 Te2
39.Sc3 g2 40.Tg1 Tf2) 37...Lxh3
38.Lc3 b6 39.Sf3 Lg2 40.Sd2
Lg5 ;

B) 35.Df1 Lh3 ;

C) 35.De2 Lg4 ;

D) 35.Txh2 gxh2 36.Sf3 Dg2]

33.De2 Sxd1 34.Dxd1 Lg5 35.Kb1
Ke7 36.Lc1 f3 37.Lxf3 gxf3 38.Dxf3
Df6 39.Dxf6+ Lxf6 40.Tg8 Le8
41.Tg2 Th1 42.Kc2 Te1 43.Tg4 Lh5
44.Tg8 Le8 45.Lb2 Kf7 46.Tg2 Ld7
47.Lc3 Te3 48.Lxa5 Lh3 49.Tf2 Ke7
50.Ld8+ Kxd8 51.Txf6 Kc7 52.Tf3
Txf3 53.Sxf3 Lg2 54.Sd2 Kb6
55.Kd3 Ka5 56.Kc3 Lh1 57.Kb2
[57.Sb1 Lxe4 58.Sa3 Kb6
59.Sb5+ -]

57...Kb4 58.Sb1 Lxe4 59.Sc3 Lf3?

Rest der Notation fehlt. Nachdem Weiß
einen einfachen Gewinn ausläßt wird
die Partie remis.

[59...Lg6 60.Sb5 e4 61.Kc2 e3+
62.Kd1 Kxb3 63.Sxd6 Lh5+ 64.Ke1
Kxa4=]

1/2-1/2

A57

□ Heppner,Ernst

2170

■ Aslan,Benjamin

2084

OLOB 11/12 (2.4)

22.10.2011

[Doe,John]

(Diagramm)

24.Tad1?

[24.Sc4 a4 25.Tab1³]

24...a4! 25.bxa4

[25.Tb1 Dd3]

25...Db2 26.Tb1?!

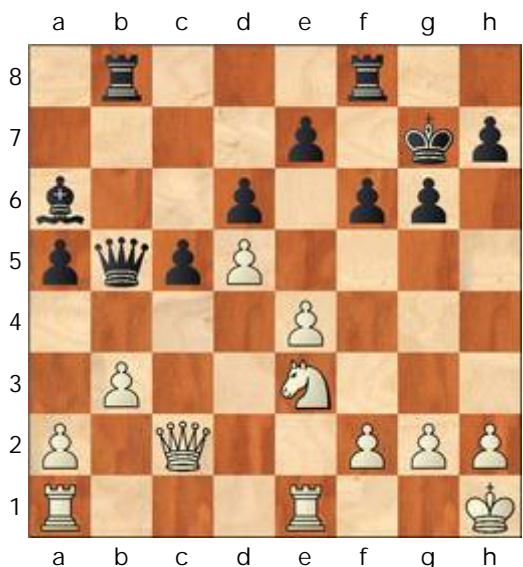
[26.Td2 Dxc2 27.Txc2 Tb4 28.Sd1
Ld3 (28...Txa4 29.Sc3 Ta3μ)
29.Td2 Txe4μ]

26...Dxc2 27.Sxc2 Ld3 28.Tbc1 Tb2

29.Se3 Txf2 30.Tc3 Lxe4 31.Ta3

Tb2 32.a5 Tb4 33.a6 Ta8 34.Kg1 f5

35.Sd1 Tb6 36.Sc3 Taxa6 37.Txa6



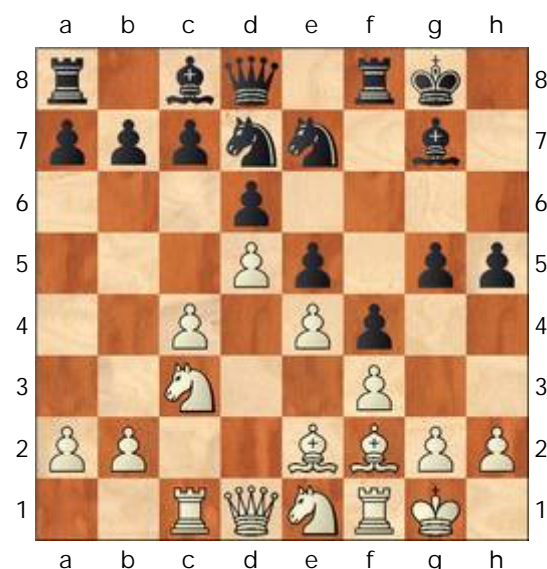
**Txa6 38.Sxe4 fxe4 39.Txe4 Kf6
40.a4 Ta7 41.Kf2 c4 42.Txc4 Ke5
43.Th4 h5 44.Ke3 Kxd5 45.Tb4 e5
46.g4 Th7 47.gxh5 Txh5 48.h4 g5
49.hxg5 Txxg5 50.Kf3 Tf5+ 51.Ke3
Th5 52.Kd3 Th3+ 53.Kc2 Kc5
54.Tb5+ Kc4 55.Kb2 e4 56.Tg5 e3
57.Kc2 Th2+ 58.Kd1 d5
0-1**

□ **Aslan,Benjamin**
 ■ **Schlamp,Robert**
 OLOB 11/12 (3.4)
 [Doe,John]

E99
2084
2339
 23.10.2011

**1.d4 Sf6 2.Sf3 g6 3.c4 Lg7 4.Sc3
0-0 5.e4 d6 6.Le2 e5 7.0-0 Sc6 8.d5
Se7 9.Se1 Sd7 10.Le3 f5 11.f3 f4
12.Lf2 g5 13.Tc1 h5 Diagramm
[13...Sg6 14.c5 Sxc5 15.b4 Sa6
16.Sd3 Tf7 17.Sb5 b6 18.Le1 Lf6
19.Sf2 h5 20.h3 Lb7 21.Tc2 Dd7
22.Dd3 Ld8 23.Ld2 Sb8 24.Tfc1
La6 25.Tc3 Tg7 26.Ta3 Se7 27.Le1
Sc8 28.Tac3 Th7 29.Sd1 Tg7
30.Lf2 Kh7 31.Sb2 Kh6 32.Kf1 Kh7
33.Ke1 Kh6 34.T3c2 Tf7 35.Sd1
Tg7 36.Lf1 Kh7 37.Tc3 Kg8**

**38.T1c2 Kh7 39.Kd2 Kg8 40.Kc1
Kh7 41.Kb2 Kg8 42.Tc1 Kh7
43.T3c2 Kg8 44.Sdc3 De8 45.Sb1
Lxb5 46.Dxb5 Df8 47.Sa3 a6
48.Da4 Ta7 49.Db3 Ta8 50.Sb1
De8 51.Sc3 Ta7 52.Le2 Kf8 53.Td1
Dd7 54.Ka1 De8 55.Tdc1 Dd7
56.Tb2 De8 57.Dd1 Tb7 58.Df1 b5
59.a4 bxa4 60.Lxa6 Sxa6 61.Dxa6
Tb8 62.Sxa4 g4 63.hxg4 hxg4
64.Kb1 Dd7 65.Sc3 Se7 66.b5 Dc8
67.Da3 Ta8 68.Db4 Dd7 69.b6
cxb6 70.Sb5 Tg6 71.Le1 Kg8
72.Db3 Kf8 73.Dd3 Kg8 74.Lb4 Tc8
75.Tbc2 Txc2 76.Txc2 Sc8 77.Kb2
gxf3 78.gxf3 Sa7 79.Sxa7 Dxa7
80.Db5 Kf7 81.Th2 Le7 82.Tc2 Tg8
83.Kb3 Ta8 84.Dc6 b5 85.Dxb5
Tb8 86.Dc6 Dg1 87.Dc3 Db1+
88.Tb2 Dd1+ 89.Ka2 Th8 90.La3
Th1 91.Dc8 Da1+ 92.Kb3 Dd1+
93.Ka2 Da1+ 94.Kb3 Dd1+ 95.Ka2
½-½ Topalov,V (2813)-Radjabov,T
(2757)/Nanjing 2009/CBM 133]**



**14.c5 Sxc5 15.b4 Sa6 16.Sd3 Sg6
17.Sb5 Ld7 18.a4 Tf7
[18...Lh6 19.Tc3 b6 20.Le1 Tf7
21.Sf2 Sh4 22.Sxd6 cxd6 23.Lxa6
De8 24.De2 g4 25.fxg4 Tg7 26.h3**

Dg6 27.Lb5 Lxb5 28.axb5 Tf8
 29.Sd1 hxc4 30.Lxc4 f3 31.Dc2
 gxc3 32.g3 Tf4 33.Se3 Txe4 34.Sf5
 Dxf5 35.Tcxf3 Dg4 36.Kh1 Tf4
 37.T3f2 Txf2 38.Txf2 e4 39.Tf6 e3
 40.Te6 Df3+ 41.Kg1 Tf7 42.Dg6+
 Lg7 43.Te8+ Tf8 44.Txf8+ Kxf8
 45.Le7+ Kg8 46.De6+ Df7 47.Dc8+
 Lf8 48.Dg4+ Lg7 49.Dc8+ Kh7
 50.Dxh3+ Lh6 51.Lg5 Df2+
 ½-½ Piket,J (2640)-Kasparov,G
 (2795)/Linares 1997/CBM 057/
 [Psakhis]

19.Sxa7 Lf8 20.Sb5 Tg7 21.Le1 g4
 [21...Sh8 22.h3 Sf7 23.Sf2 Sh6
 24.a5 Dc8 25.Ld2 g4 26.hxc4 hxc4
 27.Sxc4 Sxc4 28.fxc4 Le7 29.Tf3
 Lxc4 30.Tfc3 Lh3 31.Lf3 Dd7
 32.Sxc7 Lxc2 33.Lxc2 Sxc7 34.Dh5
 Sb5÷ Bologan "The King's Indian"]
22.fxc4 Dg5 23.h3 hxc4 24.Lxc4
**Lxc4 25.Dxc4 Dxc4 26.hxc4 c6?!
 27.dxc6 bxc6 28.Txc6 Td7 29.Lf2**
Sb8 30.Tb6 Td8 31.a5 Sd7 32.Tb7
Sf6 33.Sc7 Tac8 34.a6 Sxe4 35.a7
Sxf2 36.Sxf2 d5 37.Ta1
1-0

A87

□ **Holländische Verteidigung**

■ **Leningrad De8 Te1**

[Doe,John]

1.d4 f5 2.g3 Sf6 3.Lg2 g6 4.Sf3
Lg7 5.0-0 0-0 6.c4 d6 7.Sc3 De8
8.Te1 Df7 Diagramm

(Diagramm)

9.e4!

[9.b3 Se4= 10.Sxe4? fxe4]

9...fxe4 10.Sxe4 Dxc4

[10...Sc6 11.Seg5 Dxc4 12.Lf1 Dd5
 13.b3 Df5 14.Ld3 Dg4 15.h3 Dd7



16.Se6 Dxe6 (16...Te8 17.Sfg5)
 17.Txe6 Lxe6 18.Sg5 Ld7 19.Le3
 Sb4 20.Lc4+ Sbd5 21.Se4 e6
 22.Sxf6+ Txf6 23.Lxd5 exd5 24.g4
 Te8 25.Tc1 c6 26.Kg2 h5 27.gxh5
 Lf5 28.h6 Txe3 29.fxe3 Lxh6
 30.De2 Te6 31.Tc3 c5 32.Df2 b5
 33.b4 c4 34.Ta3 Te7 35.Dg3 Td7
 36.Kf2 Kf7 37.Ta6 Lf8 38.Tc6 Le7
 39.Ke2 Td8 40.Tc7 Ke6 41.Txa7
 Th8 42.Ta6 Kd7 43.h4 c3 44.e4
 dxe4 45.Ta7+ Ke6 46.d5+ Kf7
 47.Dxd6 Te8 48.Dc5 e3 49.d6
 1-0 Reinderman,D (2601)-Muzychuk,A
 (2528)/Aix les Bains 2011/CBM 142]

11.Sxf6+ exf6

[11...Lxf6? 12.Lh6 Te8 (12...Tf7
 13.Se5! dxe5 14.dxe5 Lg7 15.Ld5±)
 13.Se5! Db5 (13...dxe5 14.dxe5±)
 14.Lf1 Dxb2 (14...Db4 15.Lc4+)
 15.Lc4+ e6 16.Tb1 Da3 17.Te3
 Da5 18.Df3!±]

12.Te7 Sa6

[12...Sc6 13.Txc7 d5 14.Le3²]
 [12...Lg4? 13.Sd2! Lxd1
 14.Sxc4+-]

13.d5

[13.b3!

A) 13...Dd5? 14.Se5! Db5
 (14...Da5 15.Ld2 Db6 16.Ld5+

Kh8 17.Sf7+ Kg8 18.Lh6 Lxh6
 19.Sxh6+ Kh8 20.Lg8 Txc8
 21.Sf7+ Kg7 22.Sg5+ Kh6
 23.Txh7+ Kxg5 24.h4+ Kf5
 25.Df3+ Ke6 26.Te1#) 15.a4 Da5
 16.Ld2 Db6 17.Sc4 Dxd4
 18.Txc7+ ;

B) 13...Dc3 14.Ld2 Db2 15.a3 f5
 16.Le1 ;

C) 13...Db4 14.Ld2 Db6 15.De1
 Lg4 16.h3 Lxf3 17.Lxf3 Kh8
 18.Txc7 Kxc7 19.De7+ Tf7
 20.Lh6+ Kxh6 21.Dxf7 Dxd4
 22.Te1 Sb4 23.Te7 Sd3 24.Dg7+
 Kg5 25.h4+ Kf5 26.g4+ Kf4
 27.Te4+ Dxe4 28.Dxf6+ Df5
 29.gxf5 Kxf3 (29...gxf5 30.Dd4+
 Kxf3 31.De3+ Kg4 32.Dg3+ Kh5
 33.Dg5#) 30.fxc6+ Sf4 31.gxh7+- ;

D) 13...Db5 14.a4 Dh5 15.b4!±]

13...Lg4 14.Lf1 Dc5 15.Ld2 Db6
16.Tc1 Lxf3 17.Dxf3 Tae8 18.De2
Txe7 19.Dxe7 Tf7 20.De8+ Lf8
 [20...Tf8 21.De6+ Kh8 22.Lxa6
 bxa6 23.De7 Tc8 24.Tc6 Db8
 25.Lc3]

21.b3
 [21.b4 Sxb4 22.Lh6 f5 (22...Sxd5
 23.Lxf8 Txf8 24.De6+ ; 22...c6
 23.dxc6 bxc6 24.Tb1 Dc5 25.a3)
 23.Te1 Dd4 24.Dc8 Sxd5 25.Te8
 Df6 26.Dxb7 Sb6 27.Lc4 Sxc4
 28.Dd5 Kh8 29.Dxc4+-]

21...Dd4 22.Le3 Db2 23.Lh6 De5
24.Dc8 Sc5 25.b4 Se4 26.Txc7±

A88

□ Wichmann,C

2360

■ Markgraf,AI

2476

20th ZMDI Open A (6.15)

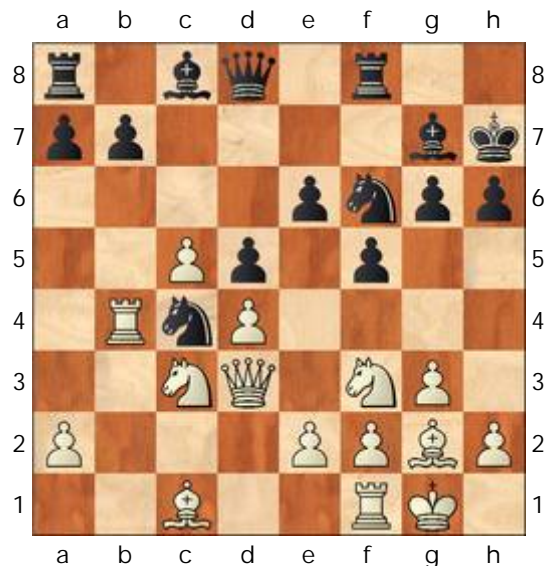
11.08.2011

[Doe,John]

1.d4 f5 2.Sf3 Sf6 3.g3 g6 4.Lg2
 Lg7 5.0-0 0-0 6.c4 d6 7.Sc3 c6

8.Tb1 Kh8 9.b4 Sbd7 10.Sg5 Sb6
11.b5 cxb5 12.c5 Sc4 13.Txb5 d5
14.f3

[14.Dd3 e6 15.Tb4 h6 16.Sf3 Kh7
 Diagramm



17.Txc4 dxc4 18.Dxc4 Sd5 19.Se5
 Sxc3 20.Dxc3 Lxe5 21.dxe5

A) 21...Tb8 22.e4 Ld7 (22...De7
 23.La3) 23.Td1 Dc7 24.Dd2 ;

B) 21...Tf7 22.e4 Tc7 23.exf5
 gxf5 24.Le3 Ld7 25.Td1 De7
 26.Td6 Lc6 27.Dd2 Lxg2 28.Kxcg2
 h5 29.Lg5 De8 30.Ld8 Tg7 31.Lf6
 Tc7 32.h3 Tac8 (32...Txc5
 33.Td7+) 33.Td4 Dc6+ 34.Kh2
 Tg8 35.Th4 De8 36.g4 fxc4
 37.Dd3+ Kh6 38.De3+ Kh7
 39.De4+ Kh6 40.hxc4+-]

14...b6 15.Dd3 a6 16.Tb1 bxc5
17.dxc5 h6 18.Sh3 Le6 19.Kh1 Lf7
20.Sa4 Tc8 21.Le3 Sxe3 22.Dxe3 d4
23.Dd2 Sd5 24.Sb6 Txc5 25.Sxd5
Dxd5 26.Sf4 Dc6 27.Tb2 Tc8 28.Sd3
Tc2 29.Db4 Txb2 30.Dxb2 Db5
31.Tb1 Tb8 32.Dxb5 Txb5 33.Ta1
Ta5 34.a3 e5 35.Kg1 Lf8 36.Kf2
Kg7 37.a4 Kf6 38.Tb1 Lc4 39.Tb6+
Le6 40.Tc6 h5 41.Ke1 g5 42.Kd2
Ke7 43.Kc2 Kd7 44.Tb6 Ld6
45.Tb7+ Lc7 46.Ta7 Kc8 47.Sb4 Ld6

48.Sxa6 Lc4
0-1

