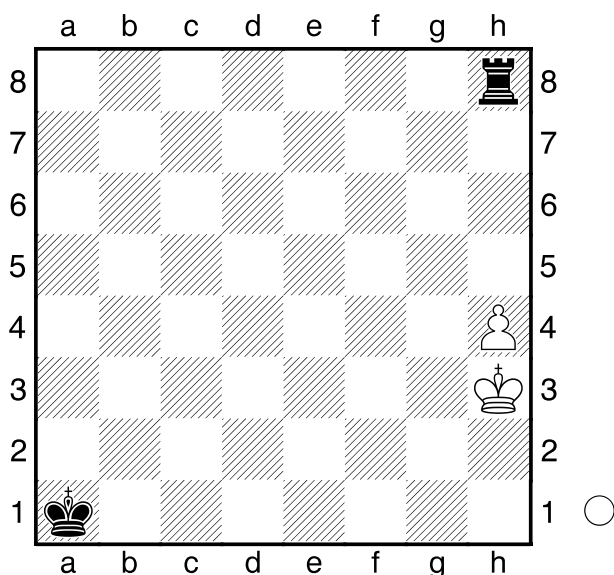


□ Schachtraining

■ KTb1

[Ernst]



1.Kg4

[1.Kg3?? Kb2 2.Kg4 Kc3 3.h5 Kd4

4.Kg5 Ke5 5.Kg6 Ke6 6.h6 Tg8+

A) 7.Kh7 Tg1 8.Kh8 Kf6 9.Kh7

(9.h7 Ta1-+) 9...Kf7 10.Kh8

Ta1-+ ;

B) 7.Kh5 Kf6 8.h7 Ta8-+]

1...Kb2 2.h5 Kc3 3.Kg5 Kc4 4.h6

Kd5 5.Kg6 Tg8+ 6.Kf7 Tg1 7.h7

Th1 8.Kg7=

□ Schachtraining

■ KTb2

[Ernst]

(Diagramm)

1.Kg4

[1.Kg3 Kb2 2.Kg4 Kc3 3.h5 Kd4

4.Kg5 Ke5 5.Kg6 Ke6 6.h6 Tg1+

7.Kh5 Kf5-+]

1...Kb2 2.h5 Kc3 3.Kg5 Kd4 4.h6

Ke5 5.Kg6 Ke6 6.Kg7 Ke7 7.h7

1.Kf3 Kb2 2.Ke4

[2.Kf4? Kc3 3.g5 Kd4 4.Kf5 Kd5

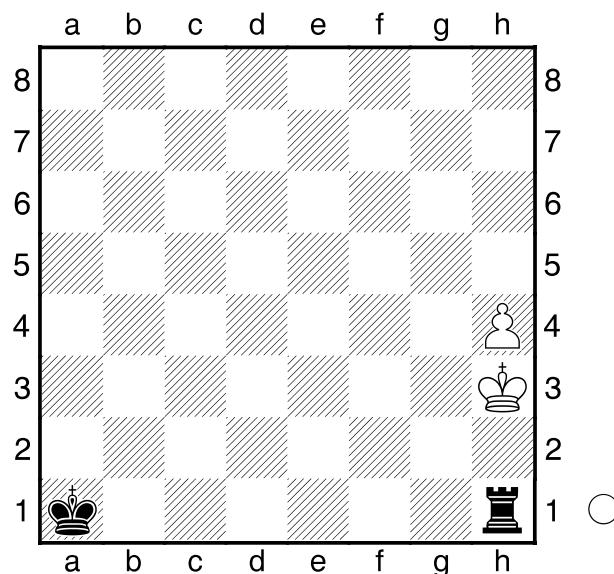
5.Kf6 Kd6 6.Kf7 Th7+ 7.Kf6 Th1

8.g6 Tf1+ 9.Kg7 Ke7 10.Kh7 Kf6

11.g7 Th1+ 12.Kg8 Tg1 13.Kh8

Kf7-+]

2...Kc3 3.g5 Th1 4.g6 Tg1 5.Kf5



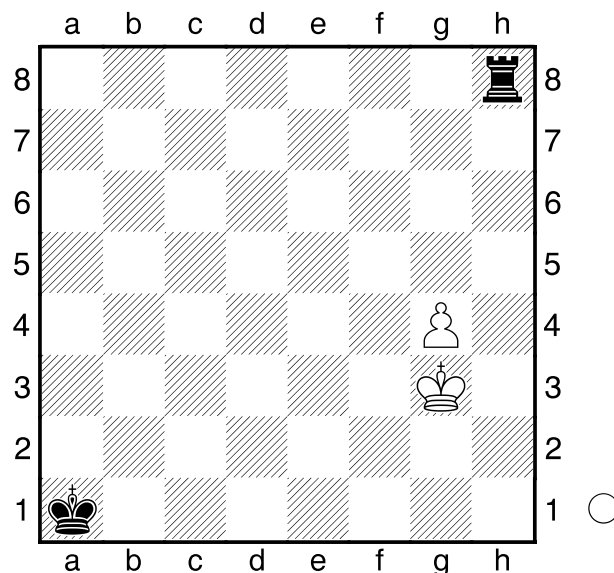
Tg1+ 8.Kh8=

[8.Kh6? Kf7 9.h8S+ Kf6-+]

□ Schachtraining

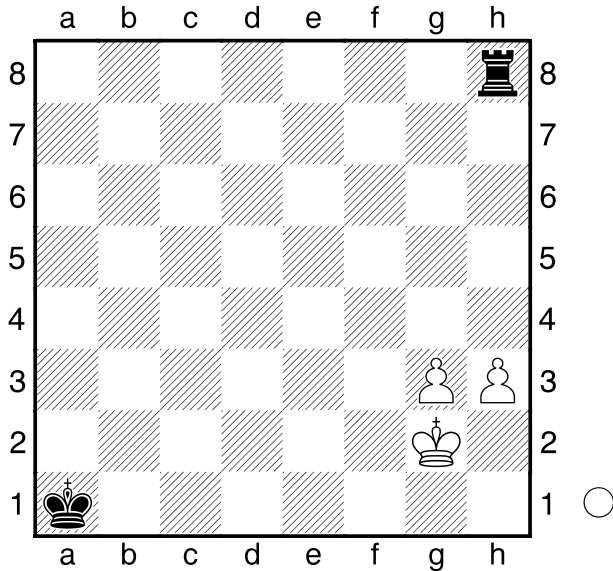
■ KTb3

[Ernst]



Kd4 6.Kf6 Kd5 7.g7 Kd6 8.Kf7 Tf1+ 9.Ke8=

□ Schachtraining
 ■ KTbb1
 [Ernst]



1.Kf3

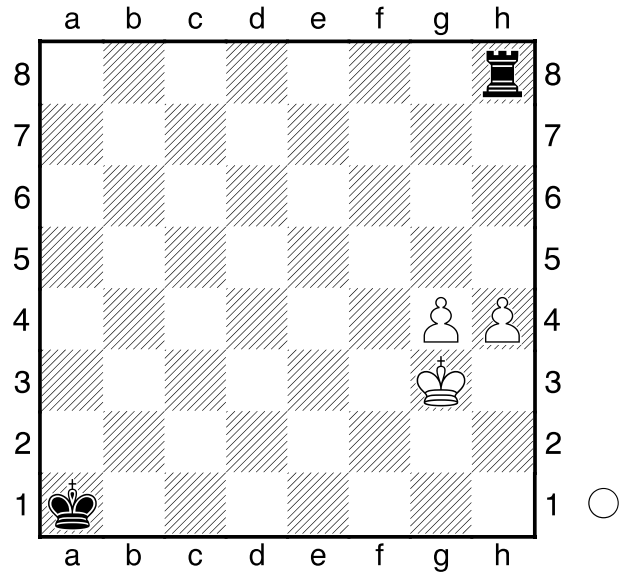
[1.g4 Tf8! (1...Kb2 2.Kf3! Txh3+=)
 2.g5 Kb2 3.h4 (3.Kg3 Kc3 4.Kg4
 Kd4 5.g6 Ke5 6.Kg5 Tf1 7.h4 Tg1+
 8.Kh6 Kf6 9.h5 Tg5 10.g7 Tg1--)
 3...Kc3 4.g6 Kd4 5.h5 Ke5 6.g7
 Tg8 7.h6 Kf6 8.Kf3 Kg6--]

**1...Txh3 2.Kf4 Kb2 3.g4 Kc3 4.g5
 Kd4 5.g6 Th1 6.Kf5 Kd5 7.g7 Tf1+
 8.Kg6 Tg1+ 9.Kf7 Tf1+ 10.Ke7=**

□ Schachtraining
 ■ KTbb2
 [Ernst]

(Diagramm)

**1.g5 Kb2 2.Kg4 Kc3 3.g6 Kd4
 4.Kg5 Ke5 5.g7**
 [5.h5 Tf8 6.g7 Tf1 7.Kg6 (7.h6?

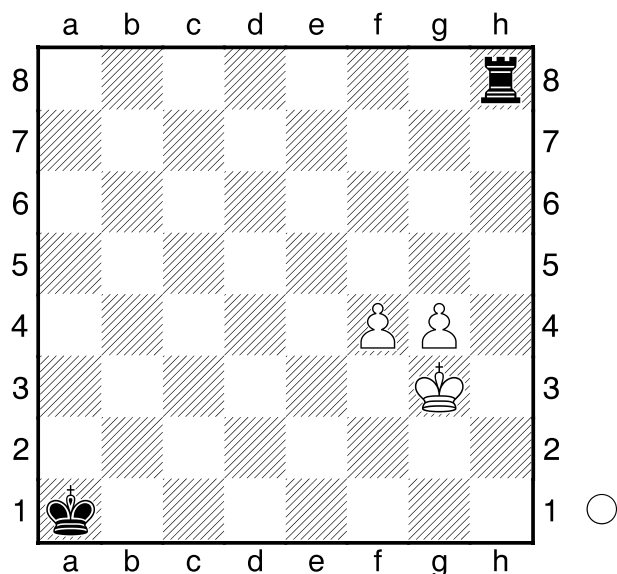


**Tg1+ 8.Kh5 Kf6--) 7...Tg1+ 8.Kh7
 Kf6 9.h6 Kf7 10.Kh8 Tg2 11.h7
 Txg7=]**
**5...Ta8 6.h5 Ta1 7.Kg6 Tg1+ 8.Kf7
 Tf1+ 9.Ke7 Tg1 10.h6 Tg6 11.Kf7
 Tf6+ 12.Ke8 Te6+ 13.Kd8 Td6+
 14.Kc8 Tc6+ 15.Kd8**
 [15.Kb7? Tg6 16.Kb8 Kf6--]
15...Td6+=

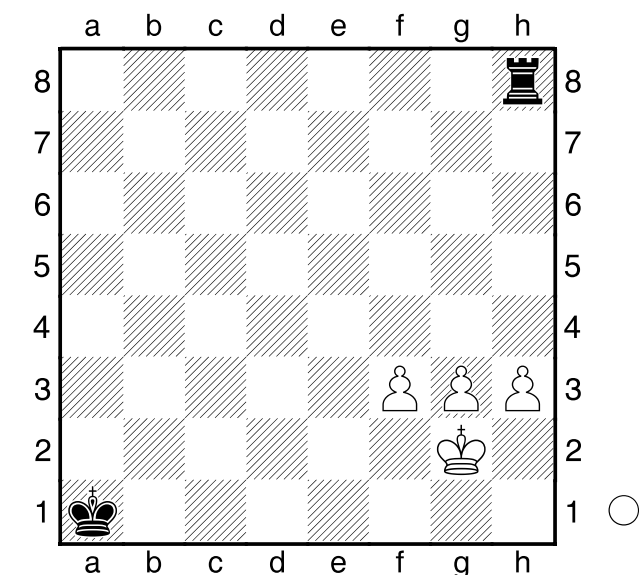
□ Schachtraining
 ■ KTbb3
 [Ernst]

(Diagramm)

1.f5 Kb2 2.f6 Kc3 3.Kf4 Kd4 4.Kf5
 Kd5 5.g5 Th1 6.Kg6 Ke6 7.Kg7 Tf1
 8.g6 Txf6 9.Kh7 Tf1 10.g7 Th1+
 11.Kg8 Kf6 12.Kf8 Ta1 13.g8S+=



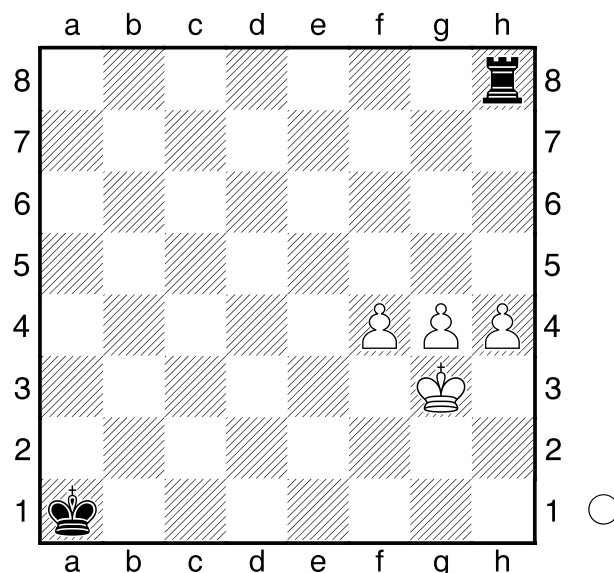
Schachtrainig
 KTbbb1
 [Ernst]



1.f4 Kb2 2.g4 Kc3 3.Kg3 Kd4 4.g5!
 [4.f5? Ke5 5.h4 Ta8 6.h5 Kf6
 7.Kh4 Ta1--]
4...Ke4 5.Kg4 Tf8 6.g6!
 [6.f5? Txf5 7.g6 Tf1 8.Kg5 Ke5
 9.h4 Tg1+ 10.Kh6 Kf6 11.h5 Tg5
 12.g7 Tg1--]
6...Txf4+ 7.Kg5 Tf1 8.g7 Ke5 9.Kg6

Tg1+ 10.Kf7 Kf5 11.h4 Txg7+
12.Kxg7 Kg4=

Schachtraining
 KTbbb2
 [Ernst]



1.g5 Kb2 2.g6 Kc3 3.h5 Kd4
 [3...Txh5 4.g7 Th1 5.Kg2+-]
4.g7 Ta8 5.h6+-

C66

Fahrni,Hans
 Salwe,Georg
 DSB-15.Kongress (11) 1906
 [Ernst]

1.e4 e5 2.Sf3 Sc6 3.Lb5 Sf6 4.0-0
d6 5.d4 Ld7 6.Te1 Le7 7.Sc3 exd4
8.Sxd4 Sxd4 9.Lxd7+ Dxd7 10.Dxd4
0-0 11.Lg5 Tfe8 12.e5 Sh5
 [12...dxe5 13.Dxd7 Sxd7 14.Lxe7
 Txe7 15.Sd5±]
13.Lxe7 Dxe7 14.Sd5 Dd8 15.Dg4?!
 [15.g4 dxe5 16.Txe5 Txe5 17.Dxe5
 Sf6 18.Td1± (18.Sxf6+ gxf6±)]
15...dxe5 16.Tad1 Sf6 17.Sxf6+ Dxf6
18.Td7 Tac8 19.Da4 De6 20.Ted1 a6

21.De4 b5 22.b3 h6 23.h3 f5 24.Db7 e4 25.Dd5

[25.Txc7 Txc7 26.Dxc7 e3 27.fxe3 Dxe3+ 28.Kh2=]

25...c6 26.Dxe6+ Txe6 27.Ta7 c5 28.Tdd7 Tg6 29.Tac7 Te8 30.Txc5 f4 31.Td2 Tge6 32.Te2 g5 33.c4 bxc4 34.Txc4 Kf7 35.Kf1 Kg6 36.Tec2 Td8 37.Ke2 h5 38.Tc6 Tdd6 39.Txd6 Txd6 40.Tc4 Kf5 41.Tc5+ Kf6 42.h4 g4 43.Txh5 Td3 44.Tc5

[44.Tg5 f3+ 45.Ke1 fxg2 46.Txg4 Th3 47.Txg2 Txh4±]

44...f3+

[44...g3 45.fxg3 Txg3=]

45.gxf3 gxf3+ 46.Ke1 Td8 47.h5 Td7 48.h6 Kg6 49.Tc6+ Kf5 50.Txa6 Tc7 51.Ta5+ Kf4 52.Th5 e3 53.fxe3+?

[53.Th4+ Kg5 54.Tc4+-]

53...Kxe3 54.Te5+ Kf4 55.Te8 Th7 56.Te6 Tc7 57.Kf1 Tc1+ 58.Te1 Tc7 59.a4

[59.Te8 Tc1+ 60.Kf2 Tc2+ 61.Ke1 Tc1+ 62.Kd2 Th1]

59...Kg3 60.Td1?

[60.a5 Tc6 61.Te7 Tc1+ 62.Te1 Txe1+ 63.Kxe1 Kg2 64.h7 f2+ 65.Kd2 f1D 66.h8D Df2+=]

60...Tc2 61.h7 Th2 62.Ke1 Txh7 63.Td3 Kg2 64.Kd1 f2 65.Td2 Kf3 66.Txf2+ Kxf2

[66...Kxf2 67.Kc2

A) 67...Ke3 68.Kc3 Tc7+ 69.Kb4 Kd4 70.Kb5 Kd5 71.Kb6 Tc6+ 72.Kb7 Tc3 73.b4 Tc4 74.a5 (74.b5 Txa4 75.b6 Tc4 76.Ka8 Kc6 77.b7 Ta4+ 78.Kb8 Tb4 79.Ka8 Kc7--) 74...Txb4+ 75.Kc7 Kc5 76.a6 Th4 77.a7 Th7+ 78.Kb8 Kb6-- ;

B) 67...Th3

B1) 68.a5

B1a) 68...Ke2 69.a6 Th6 70.b4 Txa6 71.Kc3 Ke3 72.Kc4 (72.b5 Ta4--) 72...Ke4 73.b5

Ta1 74.b6 Tc1+ 75.Kb5 Kd5 76.b7 Tb1+ 77.Ka6 Kc6-- ; B1b) 68...Te3? 69.b4? (69.a6 Te6 70.b4 Txa6 71.Kd3! Kf3 72.Kd4 Kf4 73.b5 Ta1 74.b6 Tb1 75.Kc5 Ke5 76.Kc6 Ke6 77.b7 Tc1+ 78.Kb6=) 69...Kf3 70.a6 Ta3 71.b5

B1b1) 71...Ke4 72.Kb2 Ta5 73.Kb3 Kd5 (73...Txb5+ 74.Ka4 Tb1 75.Ka5 Kd5 76.a7 Kd6 77.Ka6 Kc7 78.a8S+ Kc6--) 74.Kb4 Ta1-- ;

B1b2) 71...Ta5? 72.Kb3 Txb5+ 73.Ka4= ;

B2) 68.Kb2 Td3 69.a5 Ke3 70.Ka3 Kd4 71.Kb4 Kd5 72.Kb5 Txb3+]

1/2-1/2

C01

Rahimi

Heppner

OF II - Obertshausen

13.02.2011

[Ernst]

1.Sc3 d5 2.e4 e6 3.Sf3 Sf6 4.exd5 exd5 5.d4 Le7 6.Le2 0-0 7.0-0 Lf5 8.Se5 h6 9.Ld3 Lxd3 10.Dxd3 Sbd7 11.Df5 c6 12.Lf4 Sxe5 13.dxe5 Dd7 14.Dxd7 Sxd7 15.Tad1 Tfe8 16.Lg3 Lb4 17.f4 f6 18.Tfe1 fxe5 19.fxe5 Te6 20.a3 La5 21.b4 Lc7

[21...Lb6+ 22.Kh1 Tae8--]

22.Se4 Lxe5 23.Lxe5 Txe5 24.Sd6 b6 25.Txe5 Sxe5 26.Te1 Sc4

[26...Sf7 27.Sf5 Kf8 28.Te6=]

27.Sxc4 dxc4 28.Te6

[28.Td1]

28...Td8 29.Txc6 Td1+ 30.Kf2 Td2+ 31.Kf1

[31.Ke3 Txc2 32.g3 b5 33.a4 bxa4 34.Ta6 Txh2 35.Txa4]

**31...Txc2 32.Tc7 b5 33.Txa7 Ta2
34.Tc7 Txa3 35.Tc5 c3 36.Ke2 Ta2+
37.Kd3 Txc2 38.Kxc3 Txc2 39.Txb5
g5**

[39...Kf7 40.Ta5 Ke6 41.Ta6+ Kf5
42.b5 Te2 43.b6 Te8

A) 44.Kc4 g5 45.Kc5 (45.Kd5
Tb8 46.Kc6 g4 47.Kc7 Txb6
48.Txb6=) 45...g4 46.b7 g3 47.Ta8
g2 48.Txe8 g1D+ 49.Kc6 Dg6+
50.Kd7 Df7+ 51.Te7 Dd5+ 52.Kc7
Dc5+ 53.Kd7 Db4 54.Kd8 Dd6+
55.Td7 Db8+ 56.Ke7 h5-- ;

B) 44.b7 Tb8 45.Tb6 h5 46.Kd3
h4 47.Ke3 g5]

40.Kd3?

[40.Ta5

A) 40...g4 41.b5 Th1 42.b6 Tb1
43.Ta4 Txb6 44.Txc4+= ;

B) 40...Tf2 41.b5 Tf8

B1) 42.Kd4 g4 43.b6 Tb8
44.Kc5 Kf7 45.Kc6 g3 (45...Kg6
46.Kc7 Txb6 47.Kxb6=) 46.Ta3
g2 47.Tg3 Tc8+ 48.Kd7 Tg8
49.Txc8 Kxc8 50.b7= ;

B2) 42.b6 Tb8 43.Tb5 Kf7
44.Kd4 Ke6 ;

C) 40...Kf7 41.b5 Ke7 42.b6 Kd7
(42...Kd6? 43.Tb5) 43.Tc5 Th3+
44.Kc2 Th4 45.Kc3 Th1 46.Kc2=]

40...Kg7 41.Tb6 Tf2 42.b5 g4

43.Ke3 g3 44.Tb8?!

[44.Tb7+ Kg6

A) 45.Tc7 h5 46.b6 h4 47.b7 Tf8
48.Tc2 (48.Tc8 g2) 48...Kh5-- ;

B) 45.Tb8 Kg5 46.Tg8+ Kh4--]

44...Tf1 45.Tb7+ Kf6 46.Tb6+ Kf5

47.Tb8 g2 48.Ke2 Ke5