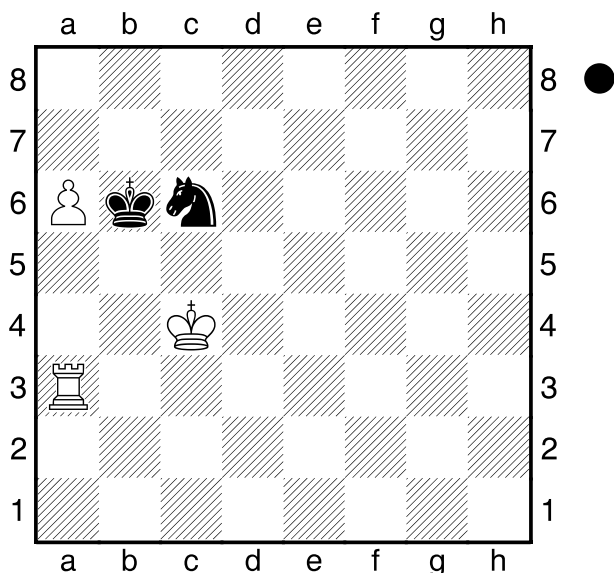


C38
 □ De Labourdonnais,Louis Charles Mahe
 ■ McDonnell,Alexander
 London m4 (9) 1834
 [Ernst]



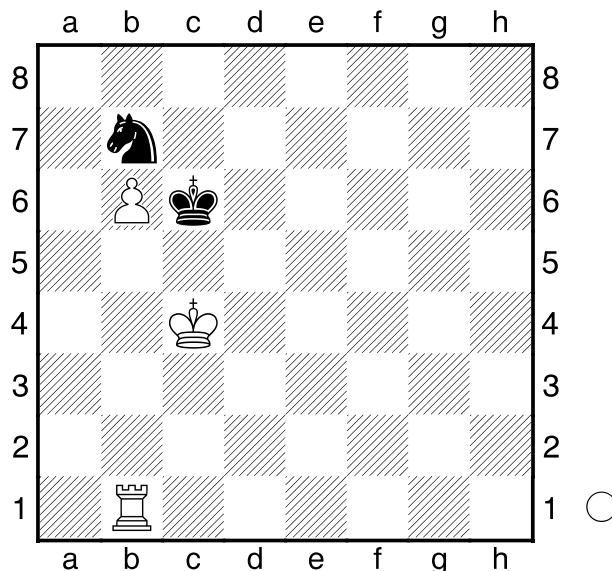
88...Sa7 89.Kd5?

[89.Ta4 Sc6 90.Kd5 Sa7 91.Kd6 Sb5+ 92.Kd7 Sa7 93.Ta1 Sb5 94.Kc8 Sa7+ 95.Kb8 Sc6+ 96.Ka8 Sd4 97.a7 Sc6 98.Ta2 Sd4 99.Td2 Sf3 100.Tb2+ Kc7 101.Tc2+ Kb6 102.Kb8+-]

[89.Ta2 Lewis Sc6 90.Ta1 Sa7 91.Kd5 Sb5 92.Ke5 Sc7 (92...Sa7 93.Kd6 Sc8+ 94.Kd7 Sa7 95.Kd8 Sc6+ 96.Kc8 Ka7 97.Kc7 Sb8 98.Ta4 Sxa6+ 99.Kc6+- ; 92...Ka7 93.Ke6 Sc7+ 94.Kd6 Sxa6 95.Kc6) 93.a7 Kb7 94.Kf6 Ka8 95.Ke7 Kb7 (95...Sb5 96.Kd7 Sxa7 97.Tb1) 96.Kd7 Sa8 97.Tb1+ Kxa7 98.Kc6+-]

89...Sb5 90.Tb3 Kxa6 91.Kc5 Sa7 92.Tb8 Ka5 The Chess Player's Chronicle 1843, p. 200
 1/2-1/2

□ Turm
 ■ Springer
 1 10.10.2009
 [Ernst]



1.Kd4 Sd6 2.Tb2 Sb7! 3.Ke5 Sc5!
 4.Kf5 Sd7 5.b7 Kc7 6.Kg6 Kb8 7.Kf7 Kc7!
 8.Ke7 Sb8! 9.Tc2+ Kxb7 10.Kd6 Sa6=
 1/2-1/2

E97
 2615
 ■ Shirov,Alexei
 ■ Fishbein,Alexander 2465
 Kerteminde (8) 1991
 [Wahls]

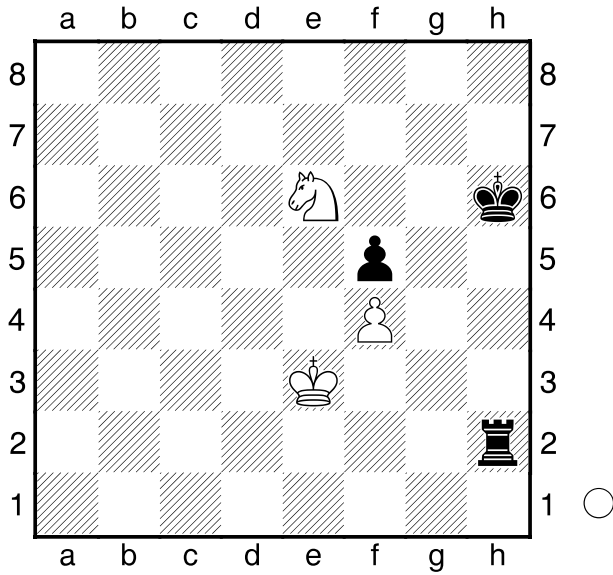
(Diagramm)

49.Sd4 Th3+?

[49...Kg6 50.Kf3 Th3+ 51.Ke2 Tc3 52.Kf2 Td3 53.Sf3 Kh5 54.Kg2 Ta3 55.Se5 Kh4 56.Sc4 Tc3 57.Se5 Tb3 58.Kf2 Kh3--]

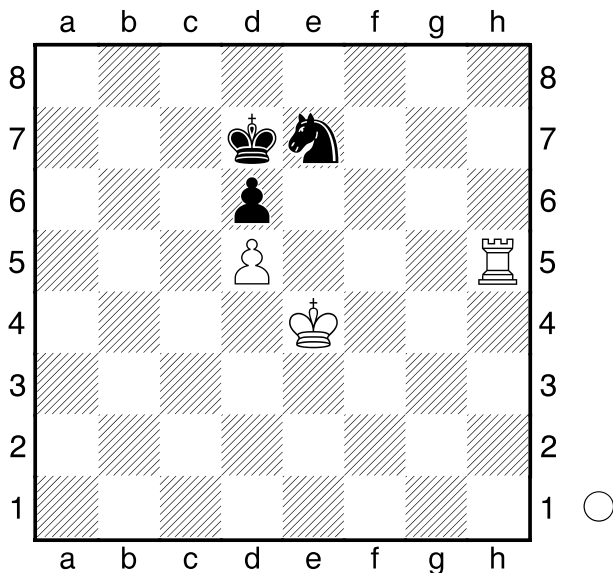
50.Kf2 Kg6 51.Ke2?

[51.Sf3 Kh5 (51...Th1 52.Kg3 Tb1 53.Sh4+ Kf6 54.Sg2 Tb3+ 55.Kf2=) 52.Kg2 Kg4 53.Se5+ Kh4



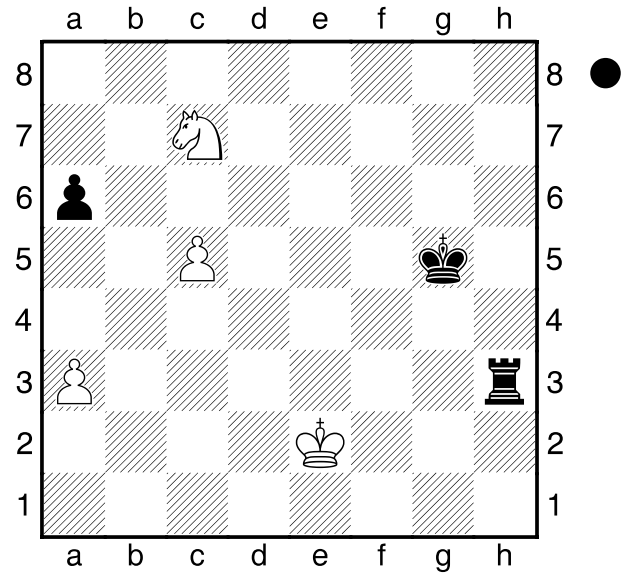
54.Sg6+=]
 51...Ta3 52.Sc2 Ta2 53.Kd3 Ta4
 54.Ke3 Tc4 55.Sd4 Tc3+ 56.Ke2
 Tc5 57.Sf3 Kh5 58.Se5 Tc3 59.Kf2
 Kh4 60.Kg2 Tb3
 0-1

Awerbach



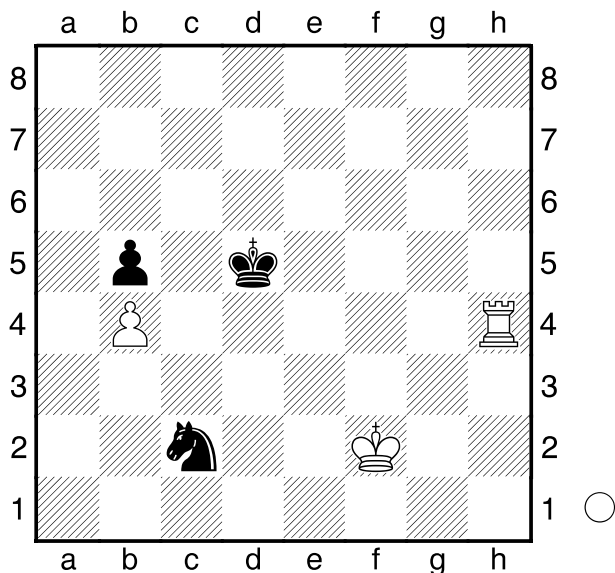
1.Kd4 Kd8 2.Kc4 Kd7 3.Th7 Kd8
 4.Txe7 Kxe7 5.Kb5 Kf6 6.Kb6
 1-0

E44
2685
2545
 1993
 Shirov,Alexei
 De Firmian,Nick E
 Tilburg (2)
 [Ernst]



53...Txa3 54.Kd2 Kf5 55.Kc2 Ke5
 56.Kb2 Ta5
 [56...Ta4 57.Kb3 Ta5 58.Kb4 Ta1
 59.Kc4 (59.Kb3 a5 60.Kb2 Th1
 61.Kb3 Kd4 62.Sb5+ Kxc5--)
 59...a5 60.Kb5 a4 61.Kb4 a3
 62.Kb3 a2 63.Kb2 Tc1 64.Kxa2
 Txc5 65.Se8 Tc8 66.Sg7 Tg8
 67.Sh5 Tg5--]
 57.Kb3 Kd4?
 [57...Ta1 58.Kb2 Ta4--]
 58.Kb4 Ta1 59.c6 Tb1+
 [59...Ke5 60.Kc5 a5 61.Sa6 Ke6
 62.Kb6 a4 63.Sc5+ Kd6 64.c7 Tb1+
 65.Ka6 Kxc7 66.Sxa4=]
 60.Ka5 Kc5 61.Sxa6+ Kxc6 62.Sb4+
 Kc5 63.Sa6+ Kc4 64.Sc7 Tb7
 65.Sa6 Tb5+ 66.Ka4 Te5 67.Sc7 Tc5
 68.Sa6 Tb5 69.Sc7 Tb7 70.Sa6 Ta7
 71.Ka5 Txa6+
 1/2-1/2

Stefansson,Hannes **B88**
 Shirov,Alexei **2455**
 Reykjavik (2) **2655**
[Ernst] **1992**

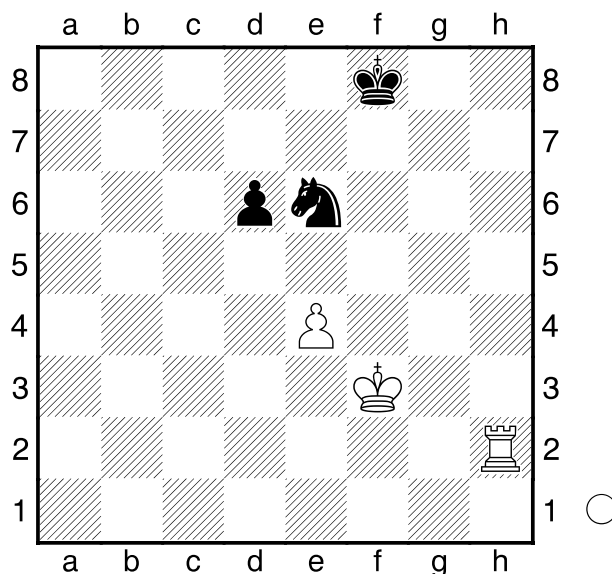


64.Ke2 Sd4+ 65.Kd3 Se6
 [65...Sc6? 66.Th5+ Se5+ 67.Ke3
 Kd6 68.Ke4+-]
66.Th5+ Kc6 67.Ke4 Sc7 68.Ke5
Sa6 69.Th4 Kc7 70.Kd5 Kb6 71.Kd6
Kb7 72.Tg4 Kb6 73.Kd7 Kb7 74.Kd8
Kb6 75.Kc8 Ka7
 1/2-1/2

Ilincic,Zlatko **E11**
 Abramovic,Bosko **2532**
 Novi Sad-Beograd tt (1) **2493**
[Ernst] **21.12.2002**

(Diagramm)

61.Th6 Ke7 62.Ke3
 [62.Kg4 Sd4 63.Kf4 Se6+ 64.Kf5
 Sd4+]
62...Kf7 63.Kd3 Ke7 64.Kc4 Kd7
65.Kd5

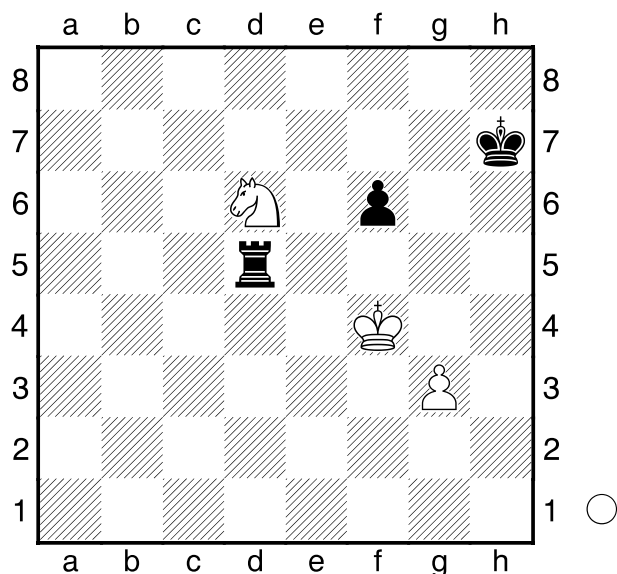


[65.Kb5 Sd4+ 66.Kb6 Sb3=]
65...Sf4+ 66.Kd4 Se6+ 67.Kc4 Ke7?
 [67...Sf4 68.Th7+ Ke6=]
 [67...Sc7 68.Th7+ Kc6 69.Kd4
 Se6+ 70.Ke3?! (70.Kd3 Sc5+
 71.Ke3)
A) 70...d5 71.e5 (71.Th6 Kd6=)
 71...d4+ 72.Kd3 Kd5= ;
B) 70...Sc7 71.Kf4 Se6+ 72.Kf5
 Sd4+ 73.Kf6 Sb3=]
68.Kd5+-
 [68.Th7+ Kf6 69.Kd5+-]
68...Sf4+ 69.Kc6 Se6 70.Th7+ Kf6
71.Kxd6 Sg5 72.e5+ Kg6 73.Th1
Se4+ 74.Kd7 Sg5 75.e6
1-0

Larsen,Bent **A60**
 Tal,Mihail
 Candidates sf1 (7) **1965**

(Diagramm)

52.Se4 Kg6 53.g4 Ta5 54.Kf3 Kf7
55.Sg3 Ke6 56.Kf4 Ta4+ 57.Kf3 Ke5
58.Sh5 Ta8 59.Ke3 Tb8 60.Kf3 Te8
61.Sf4 Kd4 62.Sh5 Te1 63.Kf2 Te4



64.Kf3 Ke5 65.Kg3 Te3+ 66.Kf2 Tb3
 67.Kg2 Tb7 68.Kf3 Tb8 69.Ke3 Tg8
 70.Kf3 Th8 71.Sg3 Th7 72.Ke3 Th8
 73.Kf3 Th2 74.Ke3 Tb2 75.Sh5 Tb3+
 76.Kf2 Td3 77.Kg2 Ke4 78.Sxf6+ Kf4
 79.Kf2 Td2+ 80.Ke1 Td6 81.g5 Kf3
 82.Sh7 Ke3 83.Sf6 Kf3 84.Sh7 Td5
 85.g6 Td7 86.Sg5+ Ke3 87.Se6 Td2
 88.Sf4 Th2 89.Sd5+ Kf3 90.Kd1 Tg2
 91.g7
 1/2-1/2

A31

□ **Timman,Jan H** **2620**

■ **Topalov,Veselin** **2700**

Hoogovens Wijk aan Zee (8) 22.01.1996
 [Stohl]

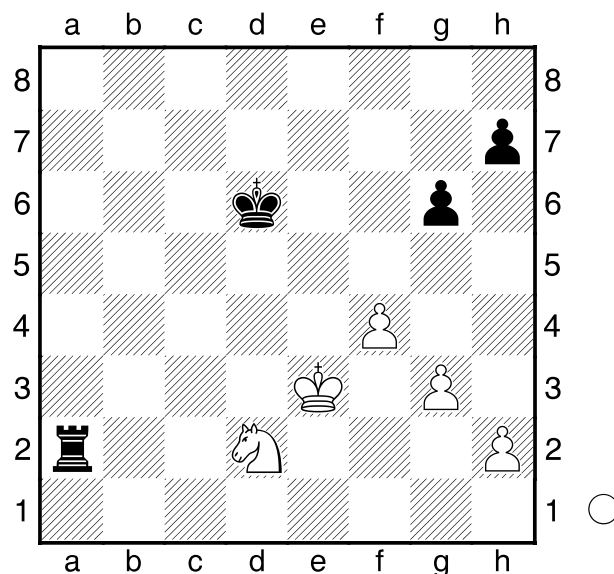
(Diagramm)

50.Se4+ Ke7 51.h3= Ta3+ 52.Kf2 h6
53.Kg2 Ke6

[53...Te3 54.Sf2 h5 55.Sd1 Ta3
 56.Sf2 Ke6 57.Se4=]

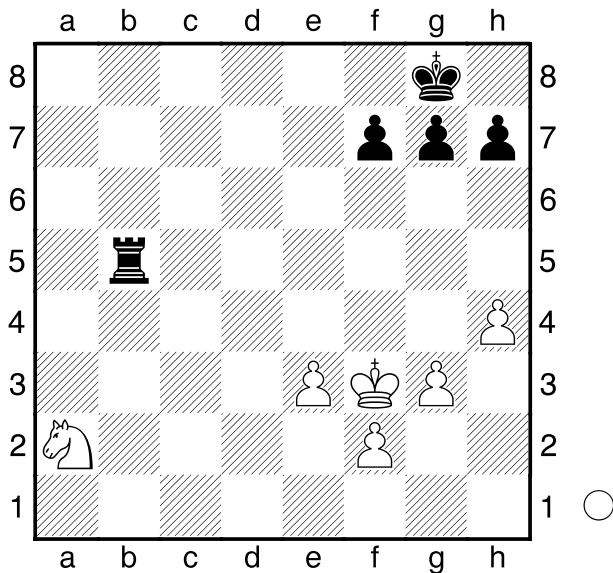
54.g4! h5

[54...Kd5 55.Sf6+ Kd4 56.Sg8 h5
 57.Se7 hxg4 (57...Ta6 58.f5)
 58.hxg4 Ta6 59.f5 g5 60.Sg6 Ke4



61.Kg3]
55.Sg5+ Kd5 56.Kf2
 [56.f5 gxf5 57.gxh5 Ke5 58.h6
 Kf6--]
56...Kd4
 [56...h4 57.Sf3=]
57.Kg2?
 [57.Ke2!]
57...Ke3 58.Kg3 Ta6?
 [58...Ta4 59.gxh5 gxh5 60.Kh4=]
 [58...h4+! 59.Kxh4 Kxf4 60.Se6+
 Ke5 61.Sf8 Kf6 62.Sd7+ Ke6
 63.Sf8+ Kf7 64.Sd7 (64.Sh7 Kg7
 65.Sg5 Te3--) 64...Ta5 65.Sb6 Ke6
 66.Sc4 Td5 67.Sb2 g5+ 68.Kg3
 (68.Kh5 Kf6--) 68...Td2 69.Sa4
 Td4 70.Sb2 Kd5--]
59.gxh5 gxh5 60.Kh4 Kxf4 61.Kxh5
Kf5 62.h4 Ta8 63.Kh6 Kg4 64.Kg6
Kxh4 65.Se6 Kg4 66.Kf6 Ta5
67.Sd4
 1/2-1/2

E04
2520
2645
 SLO-chT Bled (1) 07.11.1998
[Ernst]



34.Sc3 Nunn Ta5 35.Se2 g6 36.Sf4
Kg7 37.g4 Kf6 38.Se2 Ta1 39.Sg3
Ke5 40.Kg2 Ta4 41.f4+!

[41.Kh3 Ta2 42.Kg2 f5 43.gxf5
gxf5]

41...Kd5 42.Kf3 f6 43.g5?

[43.e4+ Ke6 (43...Kd4 44.Se2+
Kd3 45.f5) 44.g5]

43...f5 44.h5 Ta3 45.h6 Kc4 46.Ke2
Tb3

[46...Ta2+ 47.Kf3 Kd3 48.e4]

47.Sh1 Tb2+ 48.Kf3 Kd3 49.Sf2+
Kd2 50.e4 Tb3+ 51.Kg2 fxe4

52.Sxe4+ Ke3 53.Sc5 Tb4 54.Kg3

[54.Se6 Txf4]

54...Txf4 55.Sd7 Tf3+ 56.Kg4 Tf1

57.Kh3 Kf3

0-1